

AFM

Abrasive Flow Machining

EASYFLOW



Mid-range

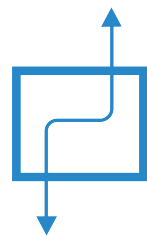
machine model offering reliable performance at an affordable price

Die polishing

is best performed by EASYFLOW

High capacity

to support your production demand



AFM

EASYFLOW

The mid-range machine, offered at an affordable price range

The EASYFLOW machine model is specifically designed for die polishing applications. EASYFLOW's adequate capacity, rigid construction and strong hydraulic power do the job with astonishing simplicity.

Be it a single or even multiple dies per cycle, EASYFLOW always finishes them to your satisfaction.



Benefits of Easyflow



Three variants to choose from

Get the machine that suits your application the best



Wide application range

EASYFLOW efficiently processes all hardened steel dies, from tablet to large extrusion and forging dies.



Large operating daylight

Enhances EASYFLOW's versatility even further



Easy to operate

Thanks to a user-friendly operating system

Abrasive Flow Machining (AFM)

AFM uses abrasive media under high pressure to polish, edge-break, and micro-debur difficult-to-finish components.



AFM Improves

- Surface structure & wear resistance
- Fatigue strength & durability
- Flow characteristics



AFM Removes

- Thermally affected layer
- Coating residue & deposits

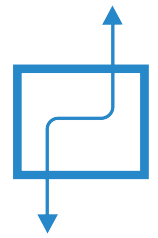


AFM Reduces

- Internal stress

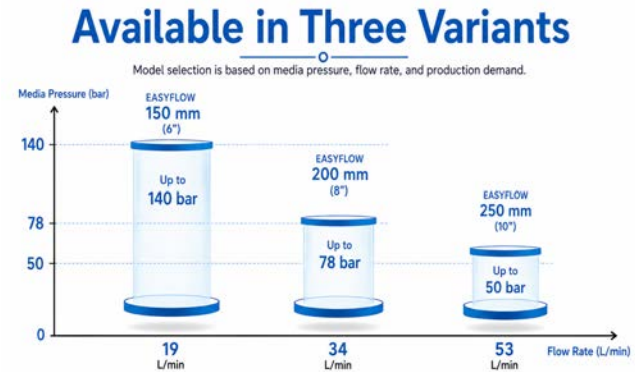
Invest now in a state-of-the-art die polishing machine directly from the inventor of the Abrasive Flow Machining process, Extrude Hone, a name you can trust.

Key Features



Available in three variants

EASYFLOW is available in three variants. The model selection is based on the media pressure & flowrate required by the application, as well as the production demand.



Media system		EASYFLOW 150	EASYFLOW 200	EASYFLOW 250
Media cylinder diameter	mm (inch)	152 (6)	203 (8)	254 (10)
Media cylinder length	mm (inch)	317 (12.5)	317 (12.5)	317(12.5)
Media capacity	ltr. (cu inch)	5.8 (353)	10.3 (628)	16.1 (981)
Max. media pressure	bar (psi)	140 (2030)	78 (1131)	50 (725)
Media flow rate (@ 50Hz supply)	lpm (gpm)	19 (5.0)	34 (8.9)	53 (14.0)



Efficient, compact hydraulics

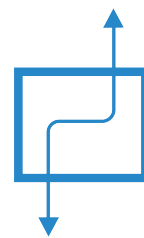
EASYFLOW is ably supported by an efficient & compact hydraulic power unit driving all operations. It is integrated with the machine and operated through the HMI panel.

Large machine daylight

A hydraulic clamping system of 500mm (19.7") daylight makes the machine's large enough to accommodate a wide range of fixtures and holds them securely while processing.

With a strong welded construction and a large worktable, the machine weighs about 2200 kg (4850 lbs).





Key Features

Capable PLC & user-friendly interface

Siemens S7-1200 PLC and a 7" TFT touchscreen control the machine. In various operating modes, the HMI can control all operations effortlessly.

Five operating screens

- Main
- Manual
- Auto
- Process data setting
- Maintenance

Mitsubishi controls can be offered as an option.

Different operating modes

- Auto / Manual
- Two way / One way media flow
- Volume / Time based

Multiple programs containing different process recipes for different components can be easily created, stored, recalled & run.



Uncompromised operator safety

The machine comes with a 2-hand operating system. The operator must start the cycle by pressing two touch-sensitive buttons simultaneously while the fixture is being clamped in the machine. Light curtains are offered as an option.

Media cylinder cooling wraps

EASYFLOW machines' top & bottom media cylinders are fitted with aluminium cooling wraps. These wraps help to dissipate the heat generated during abrasive flow machining, improving the performance and lifespan of the media.

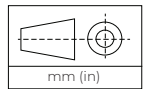
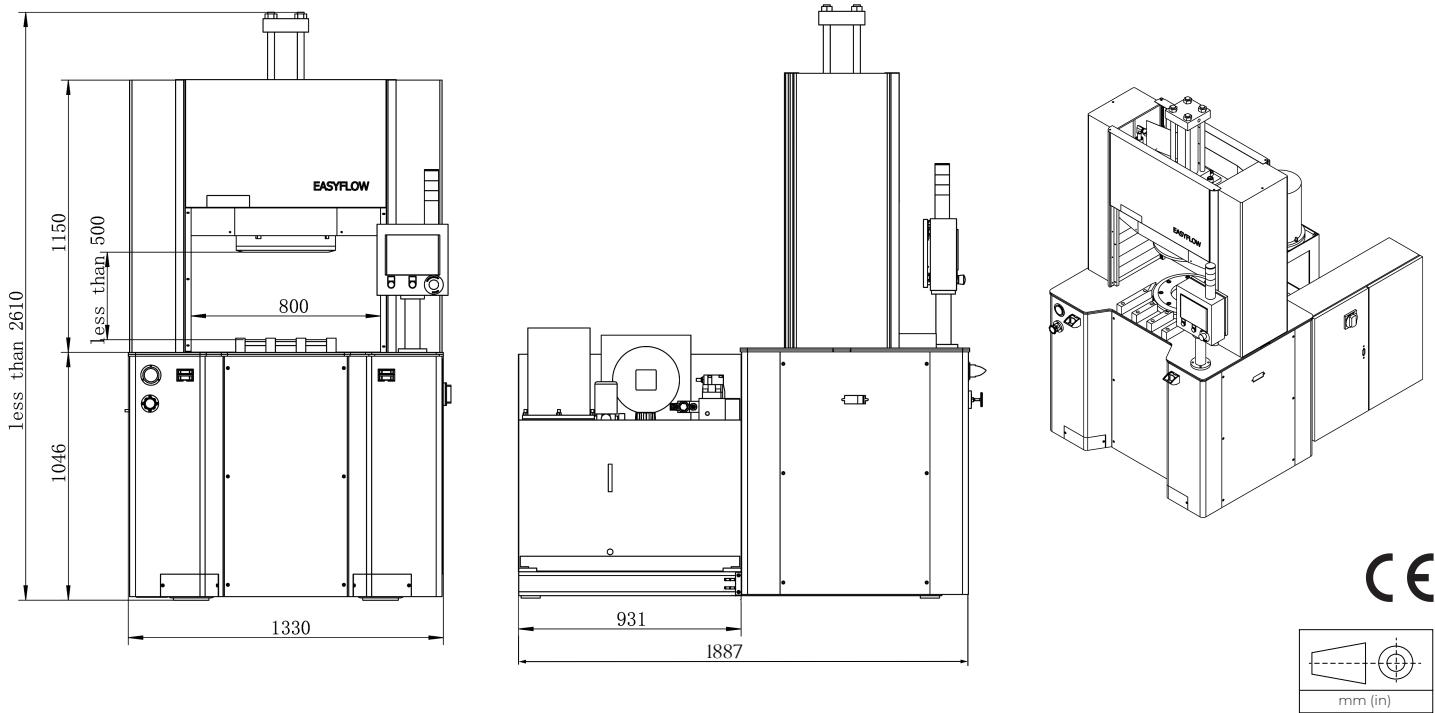
Wraps are to be connected to a cooling unit, which is not a part of the machine.



AFM EASYFLOW



Technical details



Hydraulic Power Unit

Pump flow rate	lpm (gpm)	22.0 (5.8)
Max pressure	bar (psi)	140 (2030)
Tank capacity	ltr. (gal)	100 (26)

Electrical Specification

Input (USA)	230 / 460 V AC, 3Ph
Input (EU, Asia)	400V AC, 3Ph 50Hz
Control voltage	24V DC
PLC HMI	Siemens S7-1200 7", TFT
Installed load (kVA)	6
Peak current (A)	15

Work Table

L x B	mm (inch)	800 (31) x 765 (30)
Height	mm (inch)	1040 (41)
Capacity	kg (lbs)	300 (660)

Accessories / Optional features

- Light curtain
- Mitsubishi control
- Chiller

NOTE: Specifications and availability are subject to change without notice.

Learn more
about EASYFLOW

Email us to learn how EASYFLOW brings your production a step forward in competitiveness



Scan Me
For
More Info



help@extrudehone.com | extrudehone.com